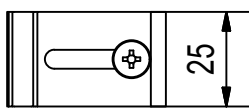
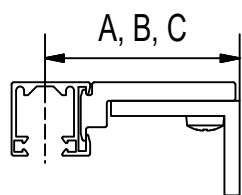
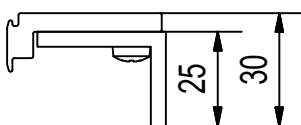
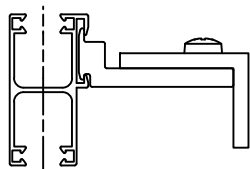


TYPES OF GUIDING RAIL HOLDERS

A, B, and C standard holders



This type of holder may be used for the guiding rails type S and SDV.



Type A: 55 - 73 mm

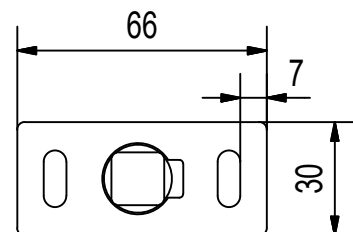
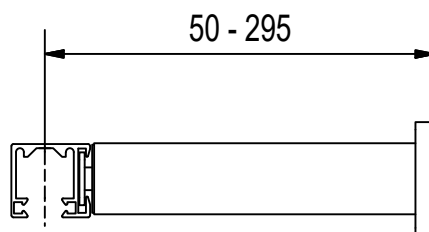
Type B: 73 - 103 mm

Type C: 103 - 155 mm

Telescopic holder

for guiding rails S, SDV, SDV 2, K, KDV, H, HDV, STL

Attention! The base of the telescopic holder exceeds the blind width for 5 mm.

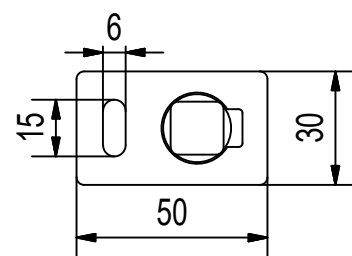
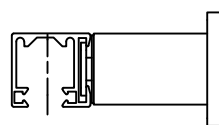


Type TA: 50 - 70 mm

Type TB: 70 - 105 mm

Type TC: 105 - 170 mm

Type TD: 170 - 295 mm

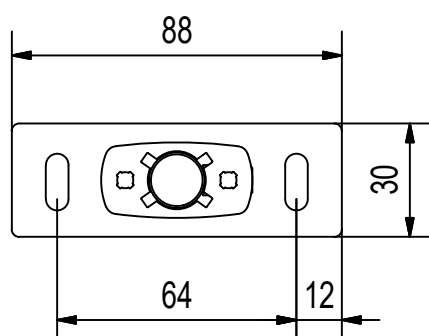
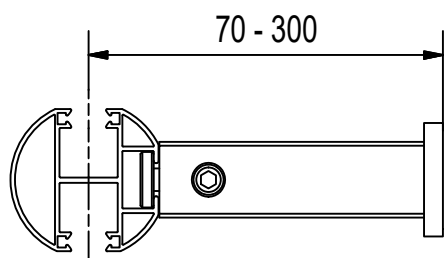


Type KV

Special holder for round guiding rails types K and KDV or STL systems used on facade (the standard holder length is 160 mm) and for square guiding rail type H, HDV.

KV holder length:

- min. length 70 mm (for blinds with a standard cover)
- min. length 85 mm (for blinds with a round cover)

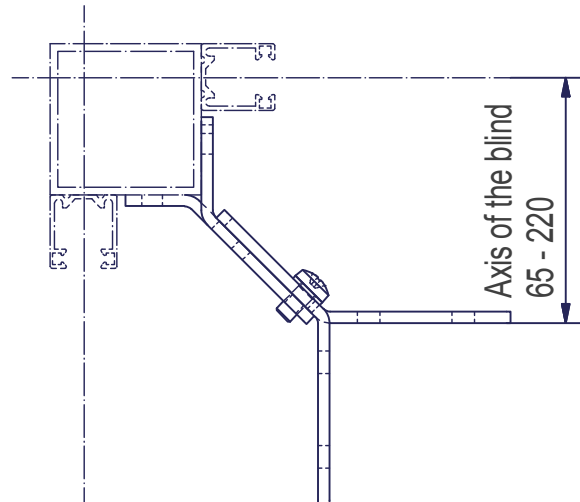


TYPES OF GUIDING RAIL HOLDERS

Guiding rail corner holder - outer

Types of holders:

- RA 65 - 80 mm
- RB 80 - 100 mm
- RC 100 - 140 mm
- RD 140 - 220 mm



Guiding rail corner holder - inner

Types of holders:

- RVA 70 - 80 mm
- RVB 80 - 100 mm
- RVC 100 - 140 mm
- RVD 140 - 220 mm

