

# ISO-KASTL - CASE FOR EXTERNAL BLINDS

## ISO-KASTL

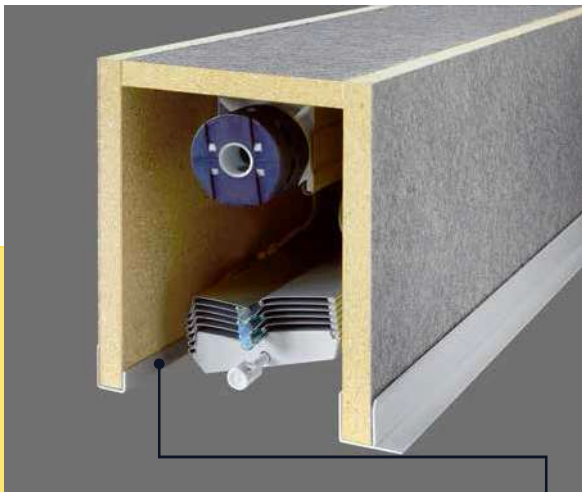
Highly variable element that is used for the installation of external blinds under facade.

The ISO-KASTL case for external blinds is designed to avoid creating heat bridges, to make blind installation easier, and to enable easy and quick installation on any building including low-energy houses.

### Advantages of the concealed ISO-KASTL case:

- Highly efficient thermal and noise insulation.
- Very good adhesion to building materials.
- 100% water resistant
- does not contain formaldehyde
- Internal dimensions are suitable for any type of external blinds.
- Easy handling due to low weight.
- System construction element for sandwich plates (see below).

### Types of ISO-KASTL cases for blinds:



Cover version without insulation



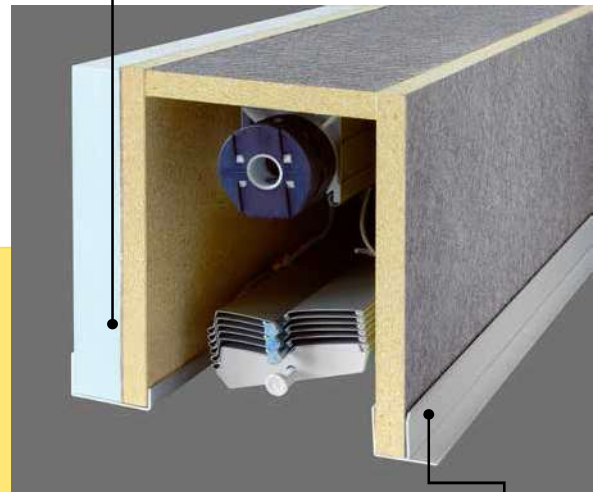
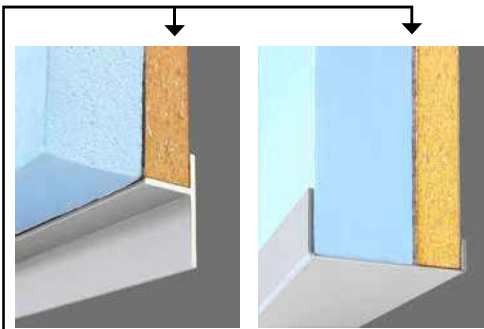
back profile "T"



back profile "U"

Cover outer width: **160 mm**  
Cover inner width: **130 mm**

The outer dimension is taken for ordering. The internal cover dimensions are reduced by the wall thickness (2 x 15 mm). **The recommended max. length of a single-piece cover is 4 m.**



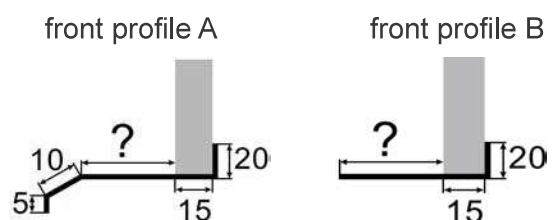
Cover version with insulation

Cover outer width: **190 mm**  
(including external insulation with thickness of 30 mm)  
Cover inner width: **130 mm**



Standard front profile (extruded)

### front profile - other variants:



# ISO-KASTL - CASE FOR EXTERNAL BLINDS

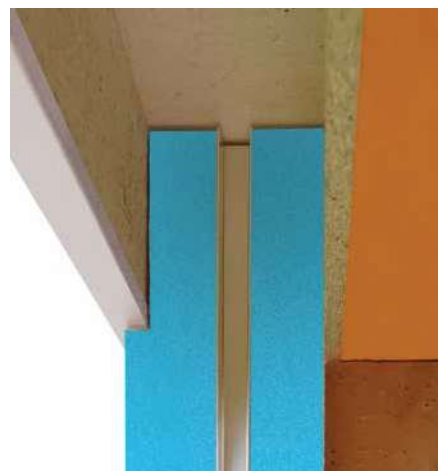
## A description of the ISO-KASTL case:

The ISO-KASTL case for external blinds is made from PURENIT® with a thickness of 15 mm. It consists of three external plates, two side plates, aluminium ends and mounting rails. **The plate surface is treated against UV radiation.** The plates are glued and clipped together to ensure sufficient strength and stability.

**The insulation thickness of insulated case is 30 mm.**

The cover's internal dimension is 130 mm; it is therefore sufficient for any type of blinds from the company ŽALUZIE NEVA s.r.o.

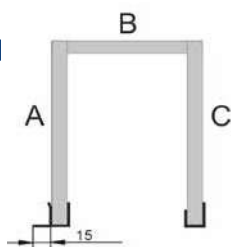
The front part of the under facade case is equipped with an aluminium end rail that ensures the strength of the front edge. The aluminium rail is an "L" profile and is fixed by screws on the inner side of the cover. The rear part of the cover is reinforced or covered by an aluminium mounting rail. To obtain the same overall appearance of the building it is recommended to treat the cover surface up to a height of 180 mm with the same coating as the final facade.



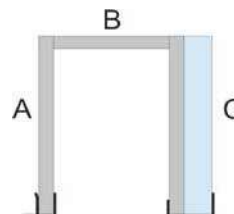
## Standard dimensions of ISO-KASTL case

(The plate thickness is 15 mm; the internal cover dimension is therefore reduced by this plate thickness.)

**Non-insulated case**



**Insulated case**



**Non-insulated case  
Dimension in mm**

A	B	C
125	160	125
165	160	165
175	160	175
205	160	205
245	160	245
265	160	265
295	160	295
325	160	325

**Insulated case  
Dimension in mm**

A	B	C
125	190	125
165	190	165
175	190	175
205	190	205
245	190	245
265	190	265
295	190	295
325	190	325

## Cover installation method:

ISO-KASTL cases for external blinds are mounted directly onto the wall or window using mounting rails and angle brackets that are attached from the top approx. 200 mm from the cover side. The distance between each bracket should not exceed 990 mm. It is necessary to fix the cover also in the bottom part to the building to ensure the required stability. If the building allows it, the covers may be mounted directly onto the lintels. In case of a different installation on the building, the cover must be attached in the middle of the upper plate, i.e., in the blind's centre of gravity, and the rail should be mounted its bottom edge.

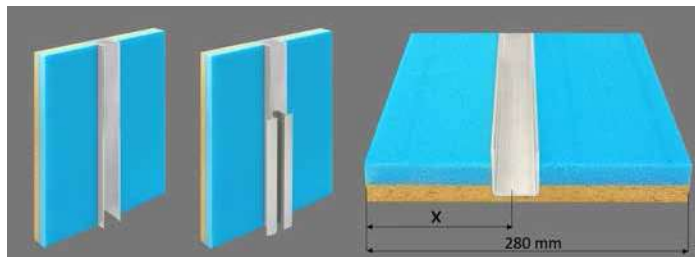
**Please contact our technical staff for further installation methods. We recommend to seal the connection of case and insulation with 2 layers of the facade net.**

## MERINIT® Sandwich plates with hidden rail

MERINIT® We recommend combining the insulating sandwich plates with the ISO-KASTL case for external blinds. This way you will obtain a quality insulated system combined with a perfect appearance of the final product. Insulating plates are cut to the final dimensions; it is necessary just to fix them to the reveal. External blinds and guiding rails are mounted after finishing the facade's final coating.

### Product description:

Insulating sandwich plate  
**with a thickness of 26 mm**  
(the plate thickness including  
the aluminium mounting rail is 32 mm)  
**Optional plate width: max. 280 mm**  
**Maximum plate length: 4 m**



In the order, always state the plate length / width and axis of the guiding profile = the distance from the plate edge (measured from the window).

The blind covers and sandwich plates are usually delivered to the site separately a few weeks before the external blinds are delivered. It is recommended to do the blind measurements after finishing the facade.

Keep in mind that the plate may be provided for a window sill.

**The slot in guiding rail must be connected to the window-sill in order to avoid water-leak inside the facade.**

Detail of a dado with  
a sandwich plate



Detail of a dado with a  
sandwich plate and a hidden  
guiding rail



Detail of a dado with  
an installed blind

