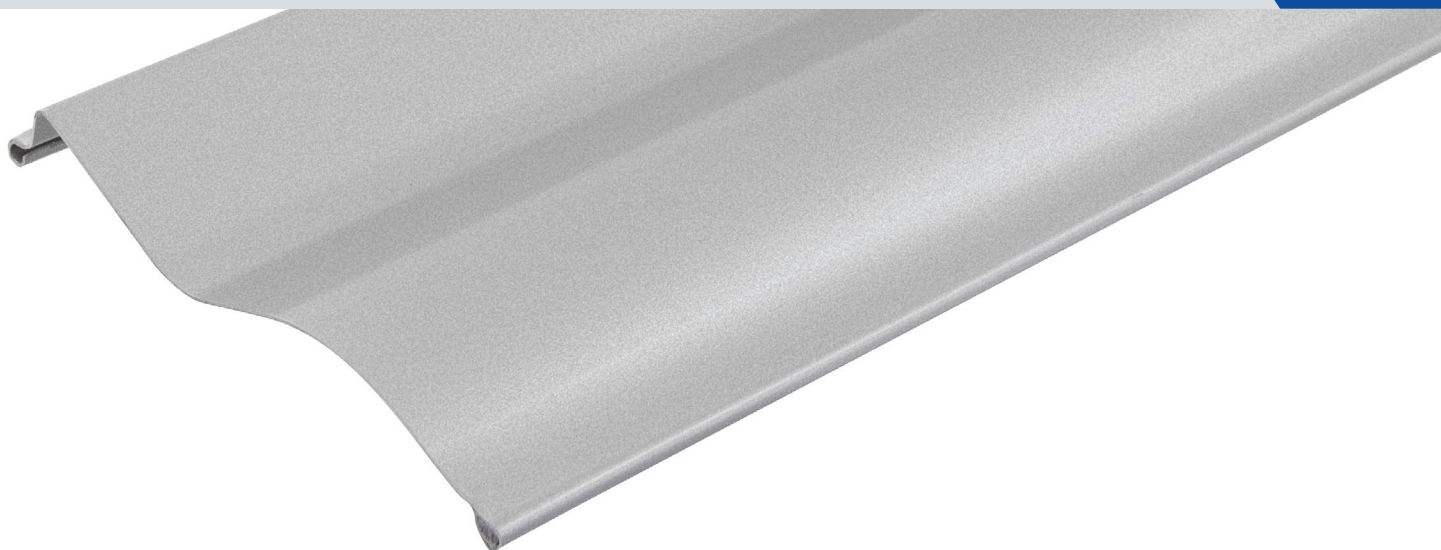


## S-90 external blinds



### S-90 EXTERNAL BLINDS

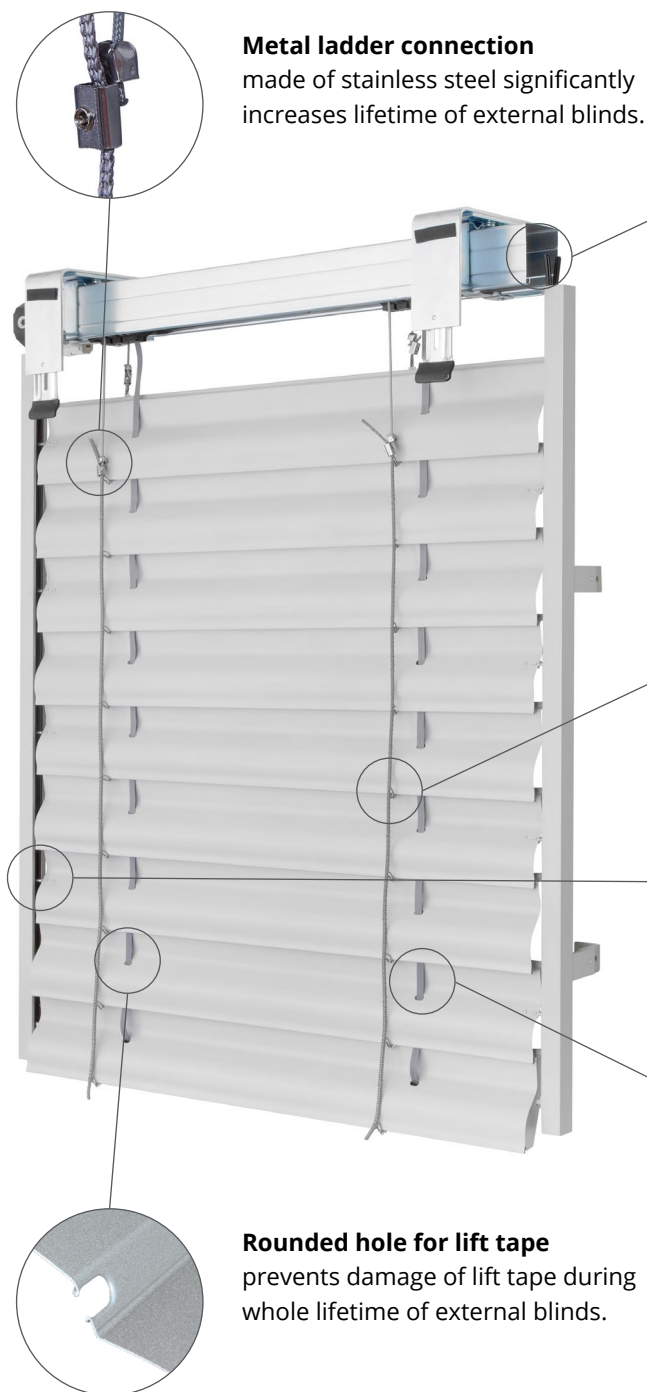
**The S-90 external blinds are truly among the best. They are a perfect combination of functionality, effectiveness and graceful design.**

They have excellent interior shading results, and with their rolled seal they, like the Z-shaped slats, also eliminate noise. In addition, they have an elegant, rounded S-shaped design. Their appearance is similar to that of roller blinds, which will be appreciated by those, who combine external blinds with roller blinds or roller doors on their house. If you are looking for a combination of elegant design and technological excellence, the S-90 blind is the right choice.

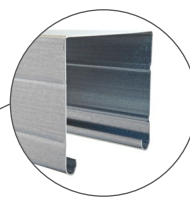
### MAIN ADVANTAGES

- » fully sealable design
- » best shading results
- » appearance similar to roller blinds – optional combination
- » noise-free operation and noise-eliminating seal
- » optional operation (crank handle/motor)
- » it's our strongest slat

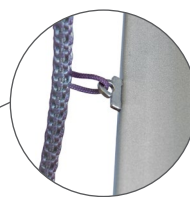
More information at [www.nevapv.com](http://www.nevapv.com)



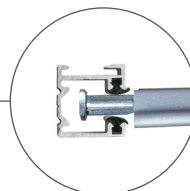
**Metal ladder connection**  
made of stainless steel significantly increases lifetime of external blinds.



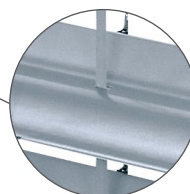
**Upper profile**  
in two finishes (extruded aluminium or galvanized steel) is opened downwards:  
» allows free access to all components,  
» prevents sticking of dirt and other obstacles,  
» allows easy adjusting, eg. of gearbox.



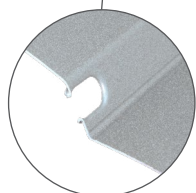
**Slat hooks**  
Slats are fixed to ladder by re-openable hooks, which allow easy exchange of any slat (repair on spot).



**Elliptical metal pin**  
placed 1 piece on each slat alternating left or right reduces external noise and wind noise to minimum.



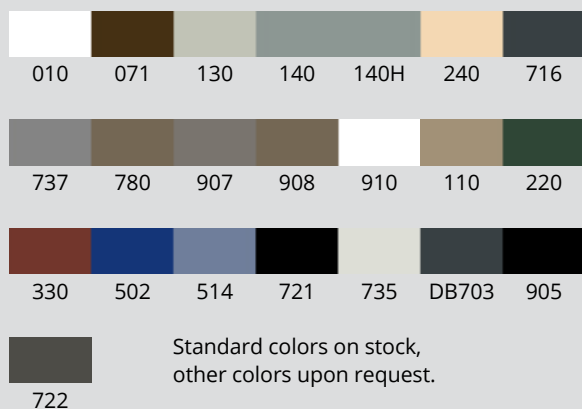
**Quality lift tape**  
In our production we use lift tape 8 mm of Swiss production, this is the highest quality component available in European market.



**Rounded hole for lift tape**  
prevents damage of lift tape during whole lifetime of external blinds.

**Components color matching**  
(ladder, lift tape, sealing profile in slats)  
» for light shades grey components are used  
» for dark shades black components are used

## STANDARD SLAT COLORS



## BASIC TECHNICAL PARAMETERS

control type	minimum width	maximum area
crank	400 mm	9 m <sup>2</sup>
motor	600 mm	20 m <sup>2</sup>
Max. width of blind		5000 mm
Max. height of blind		5000 mm
Max. width of connected blinds		8 m (motor-operated)