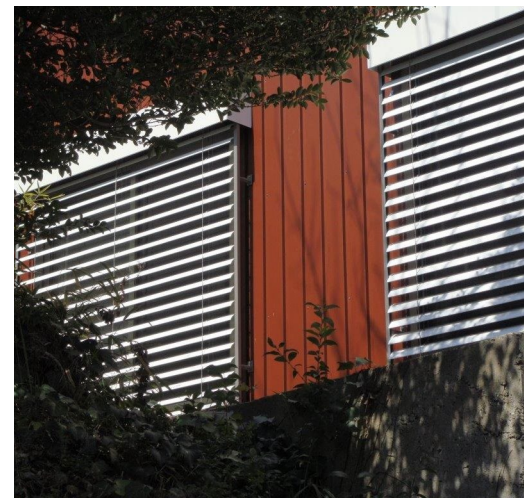


C-65 external blinds



C-65 EXTERNAL BLINDS

C-65 external blinds have a classical, curved C-shape with reinforced edges on both sides.

They can shade out high percentage of sunlight, thus preventing interior overheating. The seal in the guide rails allows them to run silently. The variants with a track in the guide rails are more resistant to strong winds and therefore less noisy than blinds on a string.

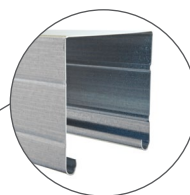
MAIN ADVANTAGES

- » very good shading results
- » very quiet operation
- » optional tilting on both sides
- » more resistant to wind thanks to reinforced edges
- » optional operation (crank handle/motor)
- » slat guide options (string/guiding rail) available
- » it´s suitable for places with narrow dado thanks to its narrow slats

More information at www.nevapv.com



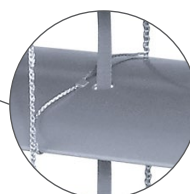
Metal ladder connection
made of stainless steel significantly increases lifetime of external blinds.



Upper profile
in two finishes (extruded aluminium or galvanized steel) is opened downwards:
» allows free access to all components,
» prevents sticking of dirt and other obstacles,
» allows easy adjusting, eg. of gearbox.



Plastic guiding pin
Made of a solid, resistant material, not riveted to the slat so it could be therefore easily replaced.



Quality lift tape
In our production we use lift tape 8 mm of Swiss production, this is the highest quality component available in European market.

Rounded hole for lift tape
prevents damage of lift tape during whole lifetime of external blinds.

Components color matching
(ladder, lift tape, guiding pins)
» for light shades grey components are used
» for dark shades black components are used

STANDARD SLAT COLORS



Standard colors on stock, other colors upon request.

BASIC TECHNICAL PARAMETERS

control type	minimum width	maximum area
crank	400 mm	9 m ²
motor	600 mm	20 m ²
Max. width of blind		5000 mm
Max. height of blind		5000 mm
Max. width of connected blinds		8 m (motor-operated)